

Tools (IMAGE 1) 1. Straight edge to cut a straight line (steel metre ruler is a good option) 2. Sharp stanley knife 3. Measuring tape 4. Chalk to mark the mat

The diagrams to the right are based on a 12ft x11ft stable. Images along the bottom show a 18ft x13ft stable. The method is applied to all sizes.

1. Start from the door going inward, lay as many full mats as you can and push them tight to the wall (**FIG 1**).
2. Take measurements A, B, C & D from the end of the mats to the adjacent wall. (**FIG 1**) (**IMAGE 2**).
3. Deduct 50mm (2 inches) from the measurements and cut the mats to that length - mark with chalk before cutting (A -2", B -2", C -2", D -2") (**IMAGE 3 & 4**).
4. Lay the cut mats to create a brickwork effect minimising joins (**FIG 2**).
5. Take measurements E, F, G & H from the edge of the mats to the opposite wall. (**FIG 2**).
6. Deduct 50mm (2 inches) and cut mats to suit as before (E -2", F -2", G -2", H -2").
7. Lay the cut mats to create a brickwork effect (**FIG 3**) minimising joins.
8. Lever the mats away from the walls, so that a 25mm (1 inch) gap is left all the way around the perimeter (**FIG 4**) (**IMAGE 6**).
9. Place spacers (using offcuts) in the 1" gaps around the perimeter to keep the mats tight while the expansion takes place - remove as needed.

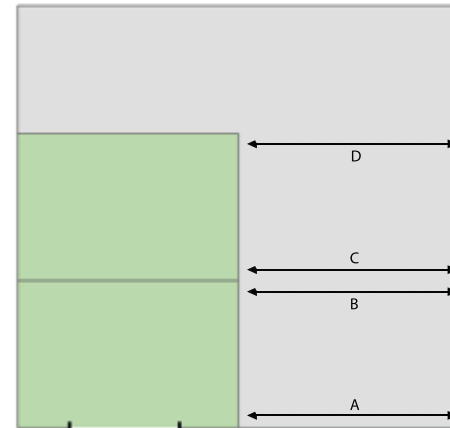


FIG 1

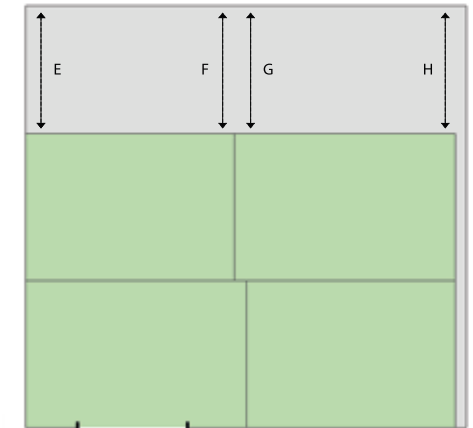


FIG 2

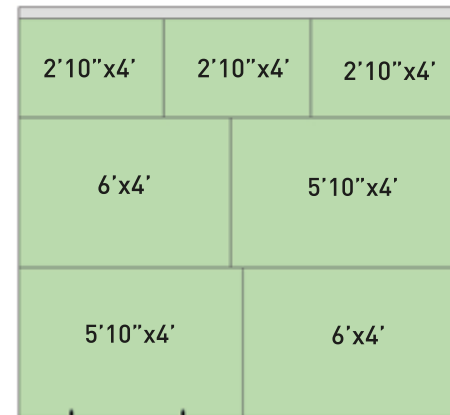


FIG 3

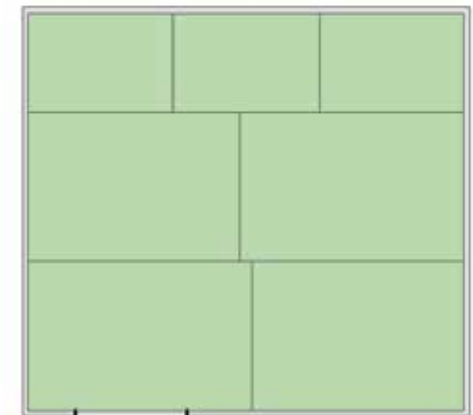


FIG 4



1



2



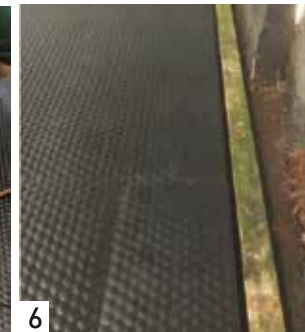
3



4



5



6

THE MATS MAY
NEED ANOTHER
TRIM AFTER
THEY SETTLE

View fitting video
on the website